



LIBRE OFFICE

Poslovna OS rešenja

LibreOffice

Savremeni kancelarijski paket otvorenog koda

- Besplatan kancelarijski softver
- Razvija ga globalna zajednica
- Dostupan za Windows, Linux i macOS
- Podržava otvorene standarde
- Alternativa komercijalnim paketima

Šta je LibreOffice?

- Open-source kancelarijski paket
- Nastao kao naslednik OpenOffice projekta
- Razvija ga The Document Foundation
- Dostupan na više od 100 jezika
- Koristi ga veliki broj institucija



This Photo by Unknown Author is licensed under [CC BY-SA](https://creativecommons.org/licenses/by-sa/4.0/)

Istorijat razvoja



- Koreni projekta u StarOffice-u
- OpenOffice postao open-source projekat
- LibreOffice nastao 2010. godine
- Kontinuirani razvoj novih verzija
- Aktivna međunarodna zajednica

Prednosti Open Source pristupa

Bez troškova
licenci

Dostupan izvorni
kod

Transparentnost
razvoja

Velika zajednica
korisnika

Dugoročna
održivost

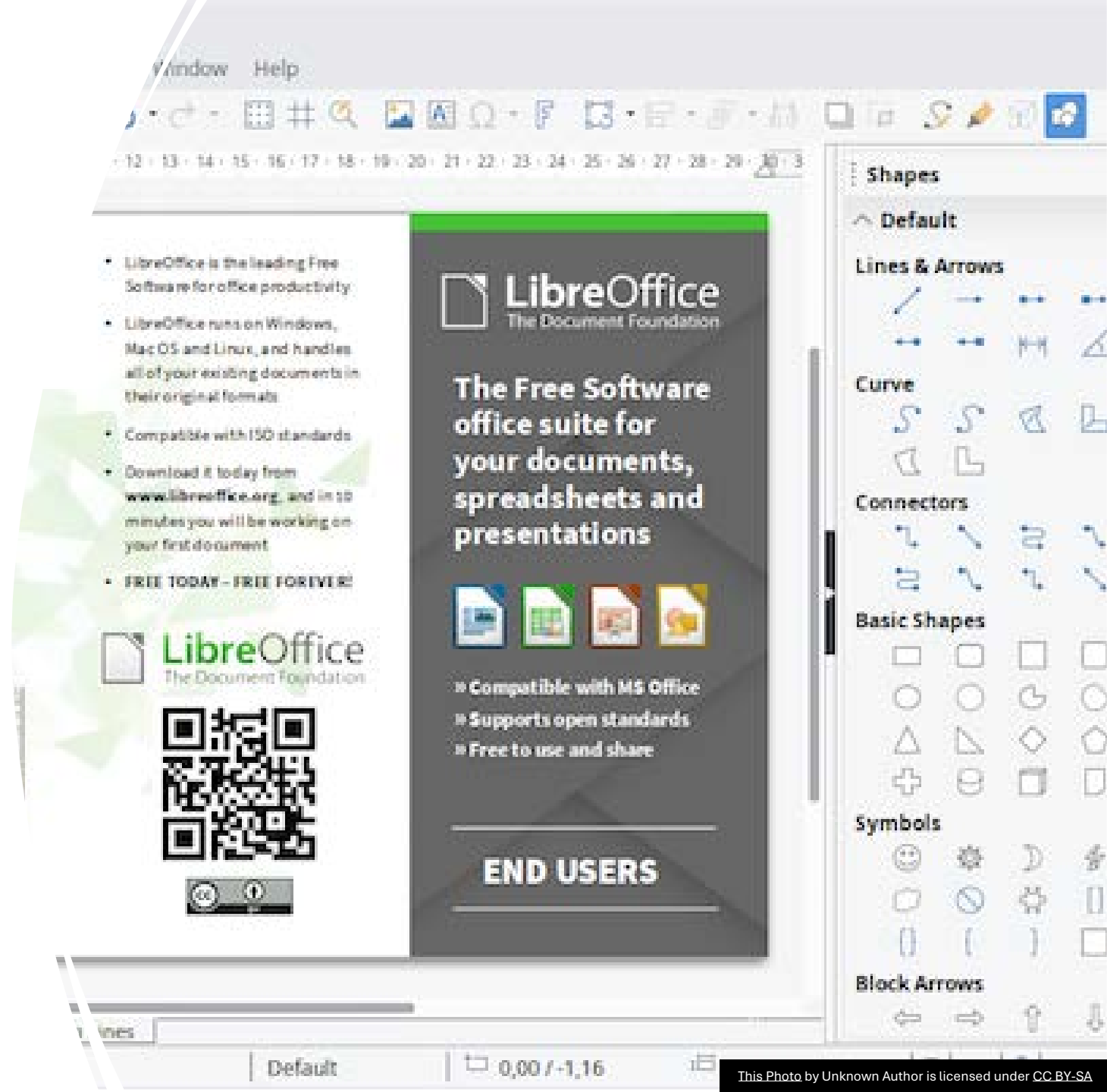
Glavne komponente

- Writer
- Calc
- Impress
- Draw
- Base i Math



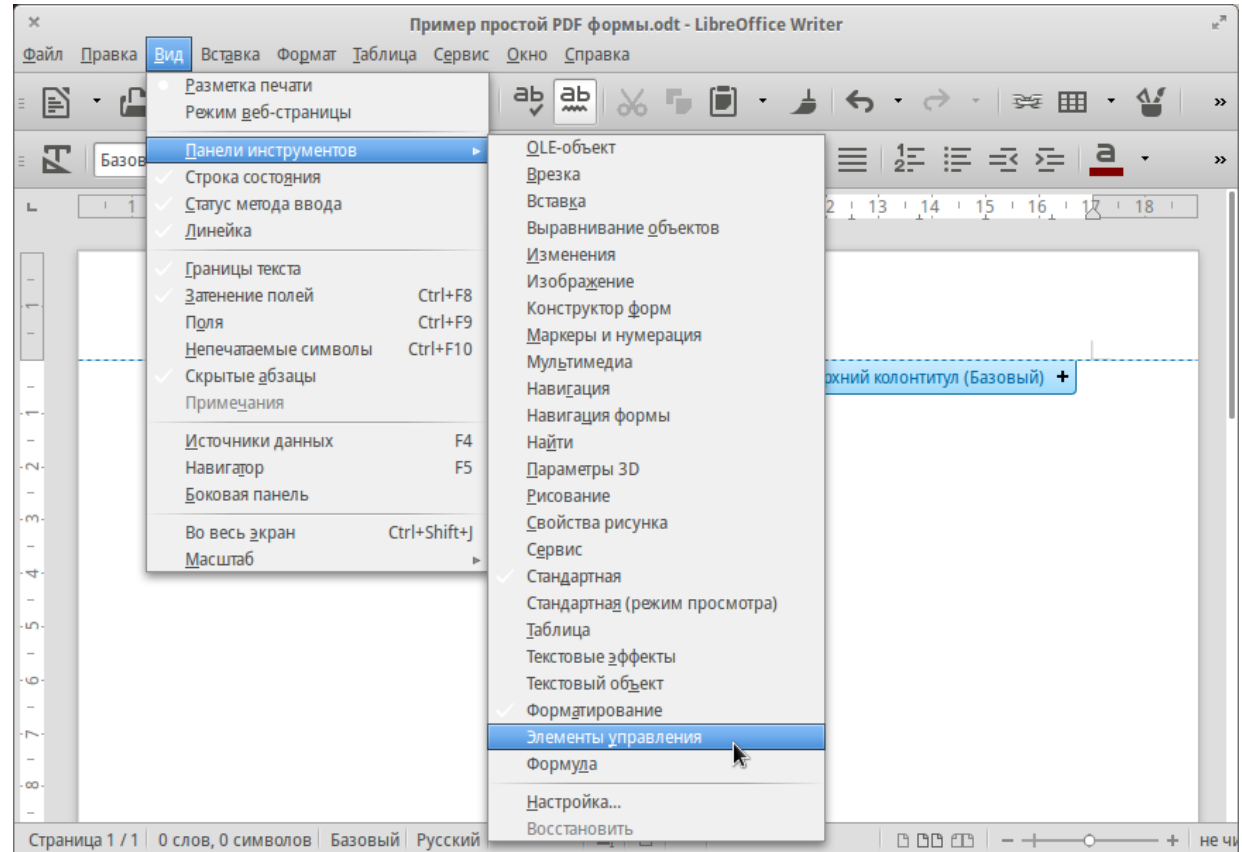
LibreOffice Writer

- Obrada tekstualnih dokumenata
- Kreiranje izveštaja
- Izrada seminarskih radova
- Napredno formatiranje
- Izvoz u PDF format



Функције Writer-а

- Stilovi i šabloni
- Tabele i grafikoni
- Automatski sadržaj
- Praćenje izmena
- Rad sa referencama



This Photo by Unknown Author is licensed under [CC BY-SA](https://creativecommons.org/licenses/by-sa/4.0/)

LibreOffice Calc

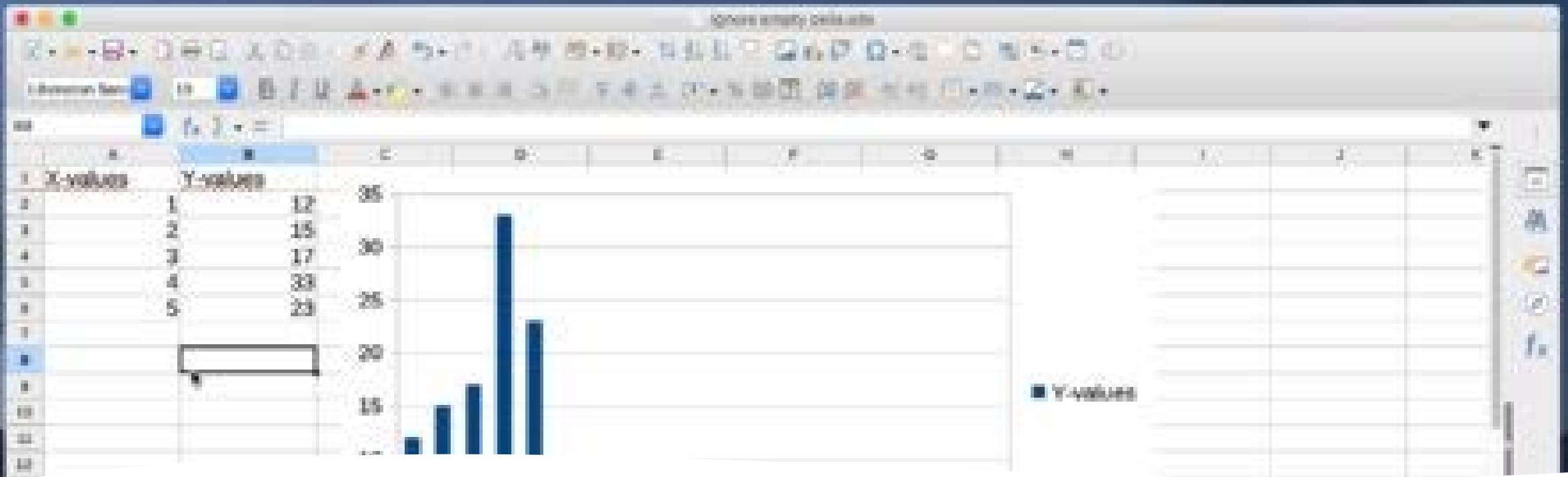
- Proračunske tabele
- Obrada podataka
- Statističke analize
- Kreiranje grafikona
- Finansijski proračuni

The screenshot displays the LibreOffice Calc interface. The main window shows a spreadsheet with columns labeled A through M and rows 1 through 27. The data in the spreadsheet is as follows:

	A	B	C	D	E	F	G	H	I	J	K	L	M
1		SALDO	SALDO	CUOTA	INTERES	AMORTIZACION	INTERES	AMORTIZACION					
2	PERIODO	INICIAL	FINAL	MENSUAL	MENSUAL	MENSUAL	ACUMULADO	ACUMULADA					
3													
4	1	50000	9747.68	252.32	2000	252.32	2000	252.32					
5	2	9747.68	23888.63	252.32	393.27	5859.05	393.27	6111.37					
6	3	888.63	2273.35	252.32	637.03	615.29	30.3	7726.65					
7	4	2273.35	4748.32	252.32	727.29	525.03	757.59	5251.68					
8	5	4748.32	155.95	254.32	659.96	592.36	417.55	8844.05					
9	6	41155.95	1334.46	255.32	302430.83	9821.49	4848.37	8665.54					
10	7	1334.46	5117.73	256.32	35.59	6216.73	883.96	4882.27					
11	8	117.73	2335.22	257.32	299469.81	2782.51	353.76	47664.78					
12	9	2335.22	2811.94	258.32	2828.94	9523.38	82.7	7188.16					
13	10	42811.94	6367.83	259.32	275.32	444	8891.02	3632.17					
14	11	367.83	2818.66	260.32	3.14	3549.18	594.16	181.34					
15	12	818.66	21974.84	261.32	408.5	843.82	9002.66	8025.16					

A context menu is open over cell G24, showing options: Cortar, Copiar, Pegar, Insertar hoja..., Eliminar hoja..., **Renombrar hoja...**, Mover/copiar hoja..., Color de la pestaña..., Proteger hoja..., Sheet Gridlines, Eventos de la hoja..., Ocultar, and Seleccionar todas.

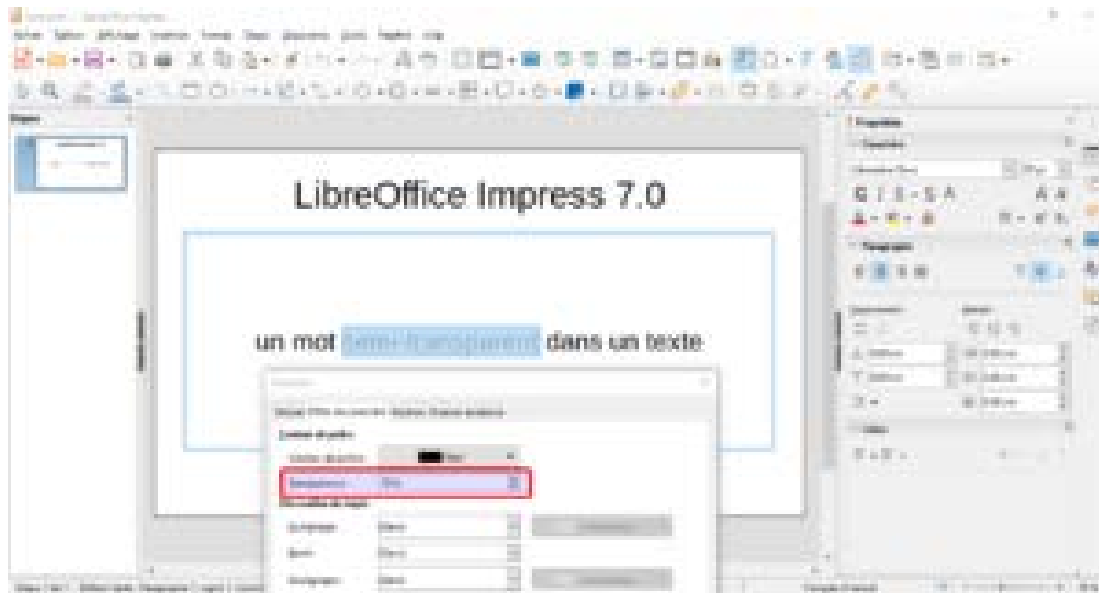
The right sidebar shows the 'Propiedades' (Properties) panel with sections for 'Estilos', 'Carácter', 'Formato numérico', 'Alineación', and 'Apariencia de celdas'. The 'Formato numérico' section is currently active, showing 'General' as the format and 'Ceros a la izquierda' as the alignment.



Funkcije Calc-a

- Matematičke funkcije
- Logičke funkcije
- Pivot tabele
- Filtriranje podataka
- Vizuelizacija rezultata

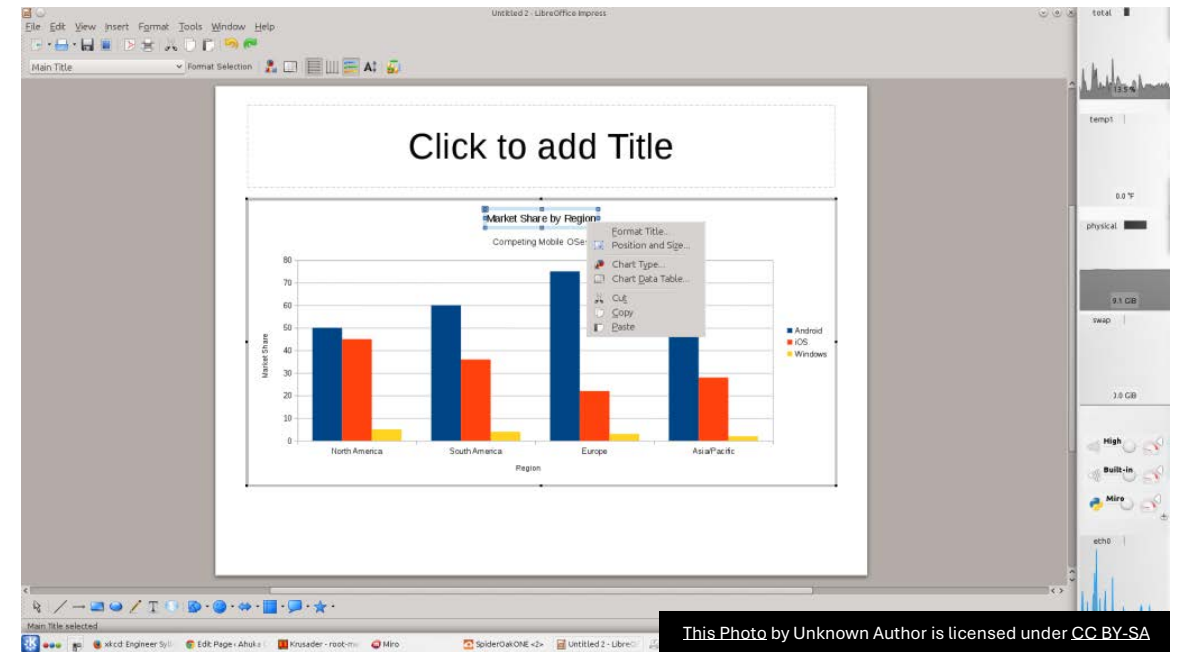
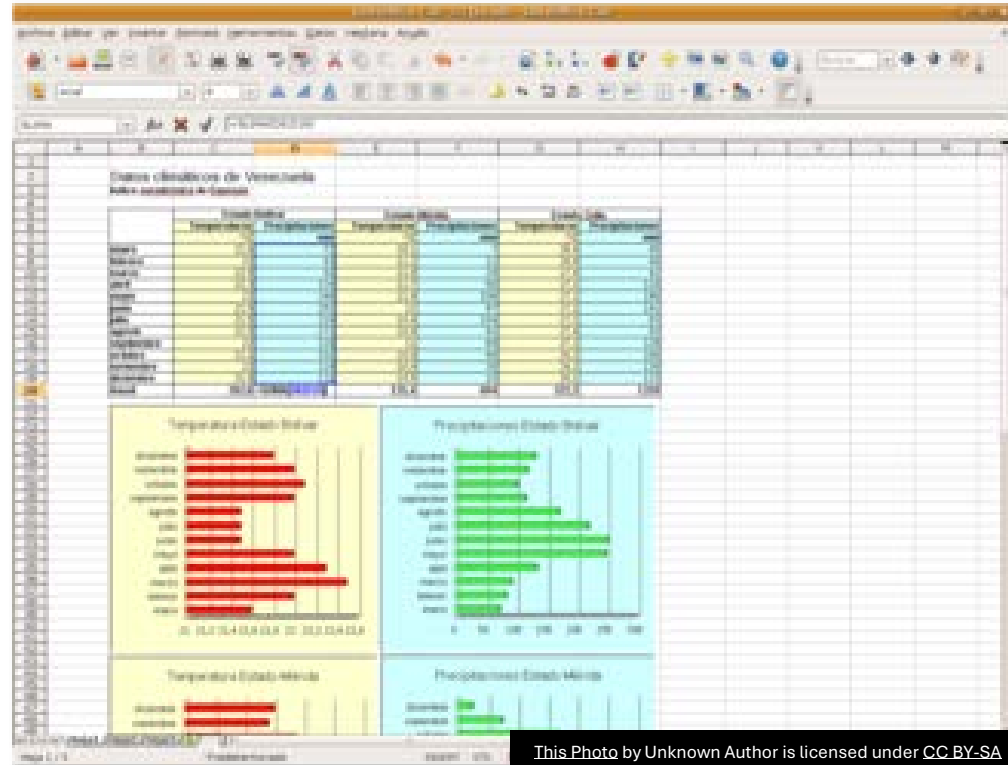
LibreOffice Impress



- Kreiranje prezentacija
- Animacije i tranzicije
- Multimedijalni sadržaji
- Predlošci dizajna
- Izvoz u PDF

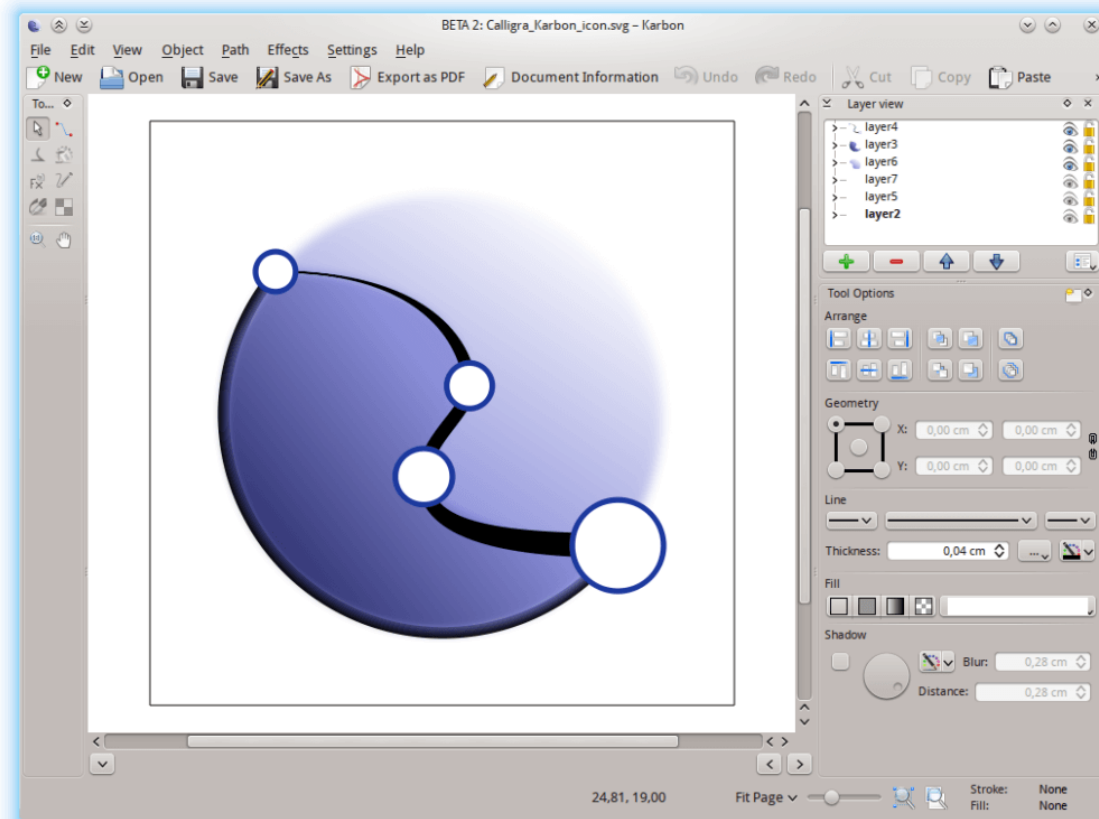
Impress u obrazovanju

- Predavanja
- Studentske prezentacije
- Seminari
- Naučne konferencije
- Online nastava



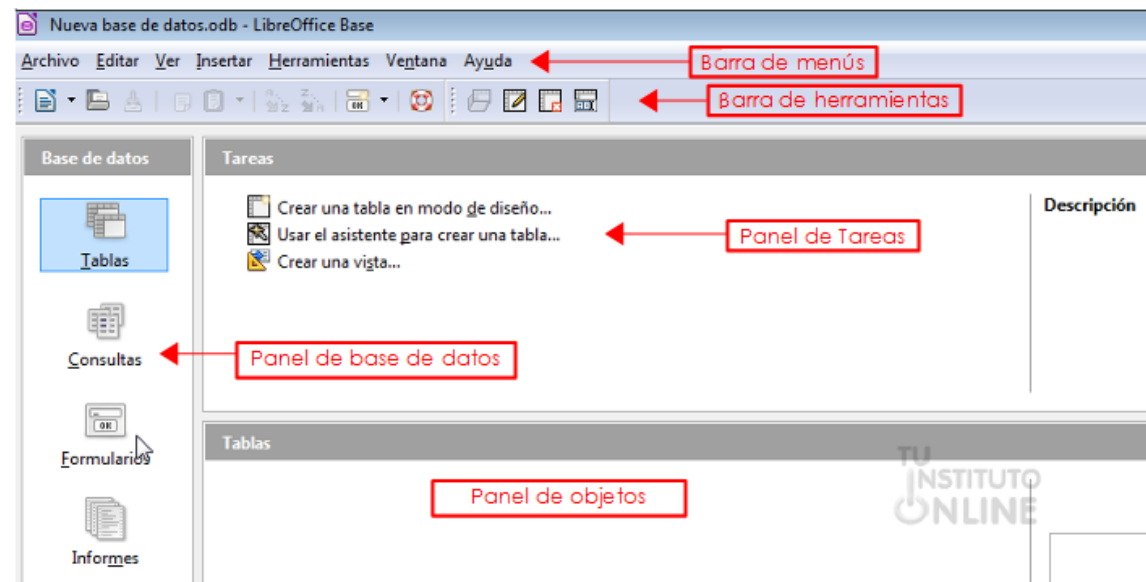
LibreOffice Draw

- Vektorska grafika
- Tehnički dijagrami
- Organizacione šeme
- GIS ilustracije
- Jednostavna obrada PDF-a



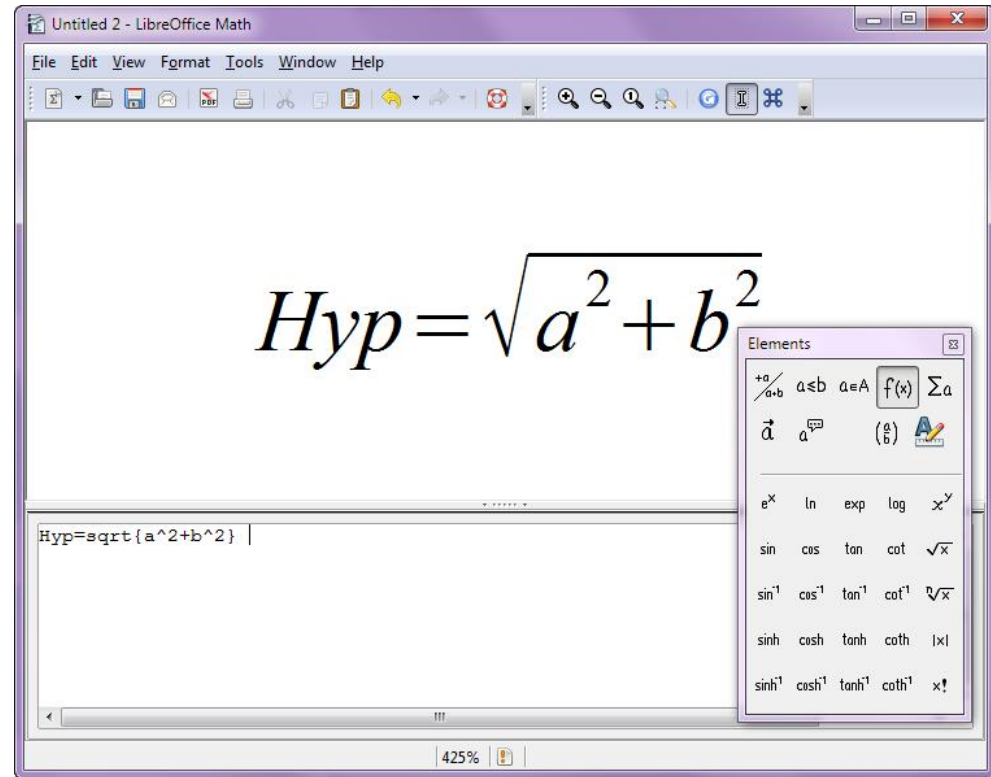
LibreOffice Base

- Upravljanje bazama podataka
- Kreiranje tabela
- Forme za unos podataka
- Upiti i izveštaji
- Integracija sa drugim sistemima



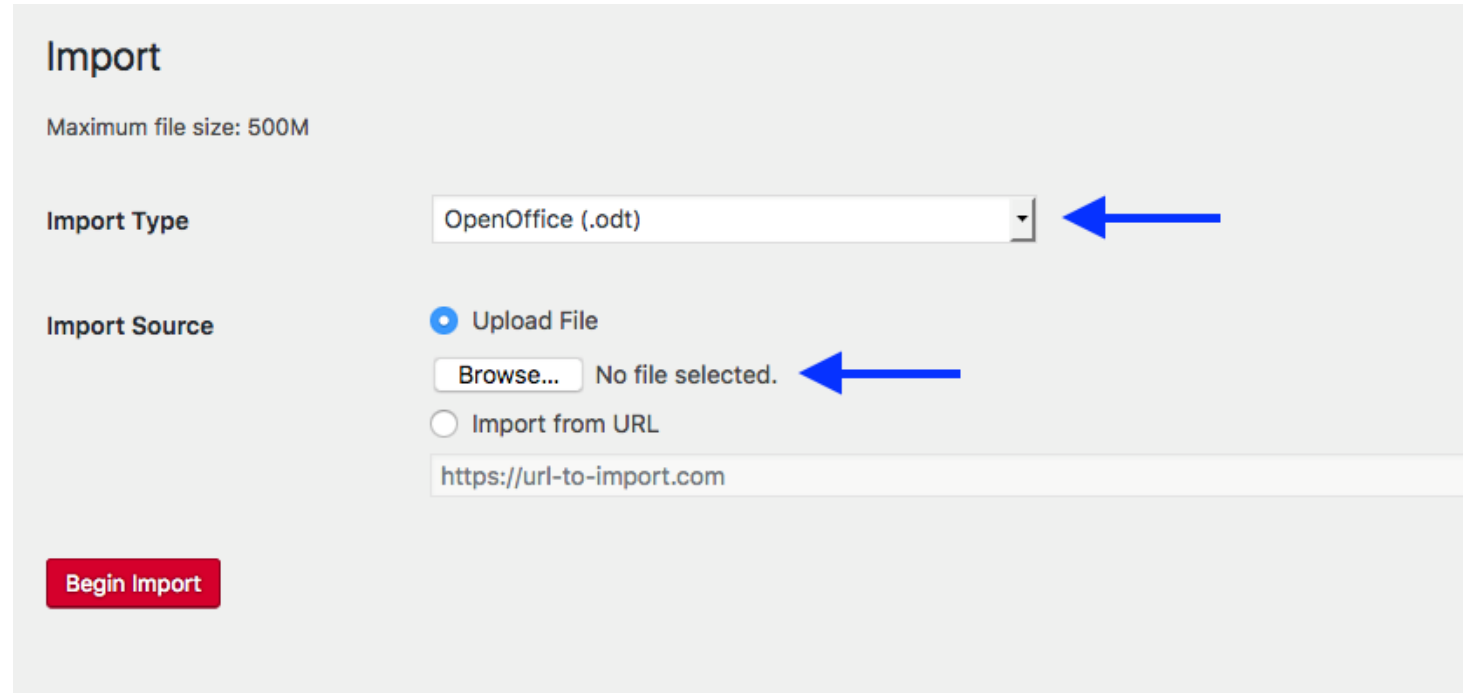
LibreOffice Math

- Pisanje matematičkih formula
- Naučni radovi
- Inženjerski proračuni
- Matematički simboli
- Integracija sa Writer-om



Formati dokumenata

- ODF standard
- ODT dokumenti
- ODS tabele
- ODP prezentacije
- Podrška za Microsoft formate



The screenshot shows a web form titled 'Import' with a maximum file size limit of 500M. It features two main sections: 'Import Type' and 'Import Source'. The 'Import Type' section has a dropdown menu currently set to 'OpenOffice (.odt)', with a blue arrow pointing to it from the right. The 'Import Source' section has two radio buttons: 'Upload File' (which is selected) and 'Import from URL'. Under 'Upload File', there is a 'Browse...' button and the text 'No file selected.', with a blue arrow pointing to the text from the right. Under 'Import from URL', there is a text input field containing the URL 'https://url-to-import.com'. At the bottom left of the form is a red button labeled 'Begin Import'.

Import

Maximum file size: 500M

Import Type: OpenOffice (.odt)

Import Source:

- Upload File
- Import from URL

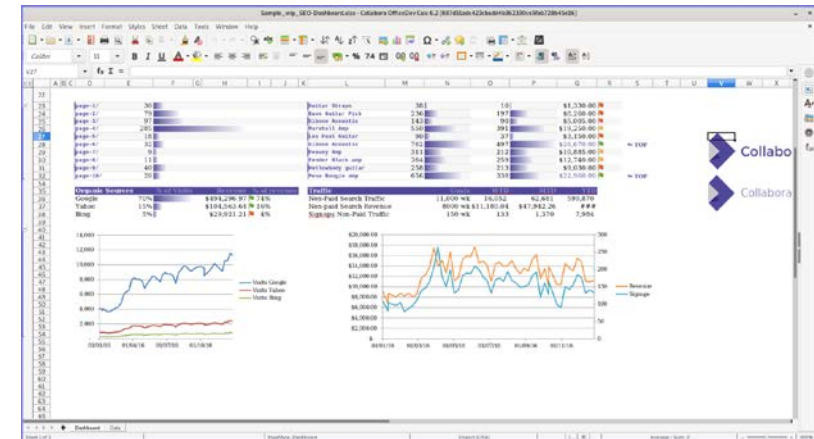
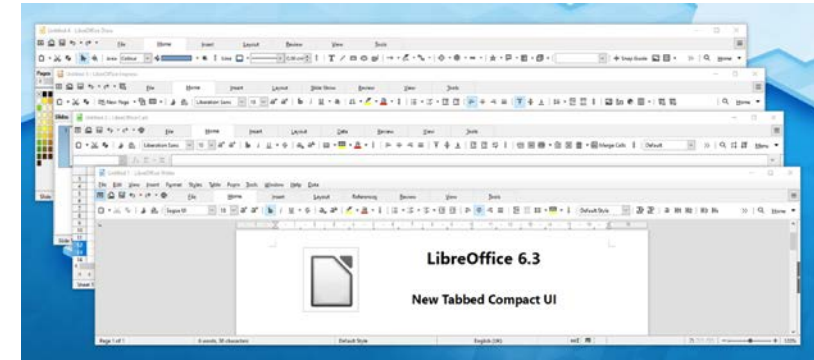
Browse... No file selected.

https://url-to-import.com

Begin Import

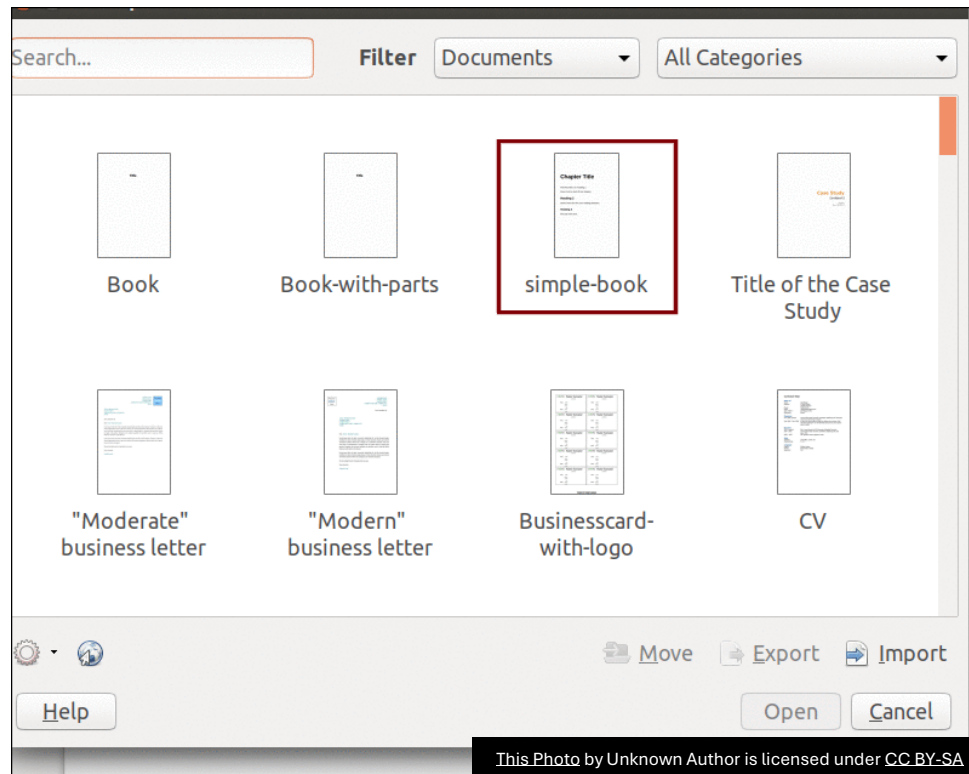
Kompatibilnost

- DOCX dokumenti
- XLSX tabele
- PPTX prezentacije
- PDF izvoz
- Rad na više platformi

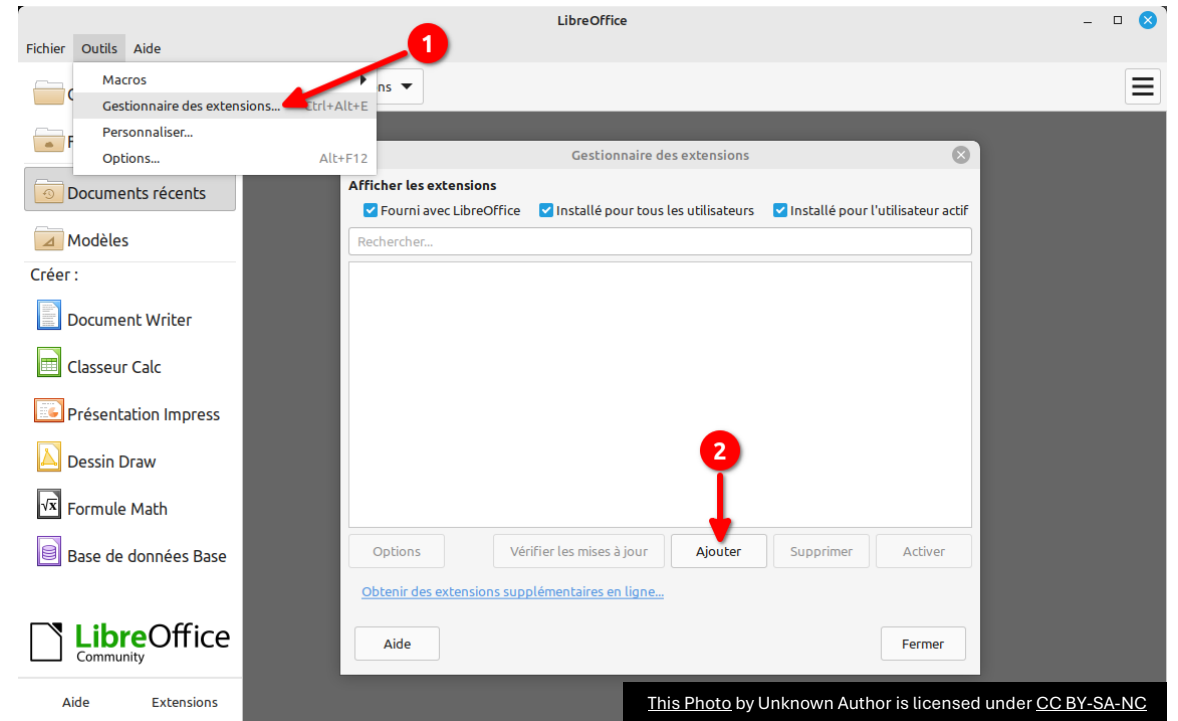


Primena u obrazovanju

- Univerziteti
- Visoke škole
- Istraživački centri
- Online nastava
- Digitalna pismenost



This Photo by Unknown Author is licensed under CC BY-SA



This Photo by Unknown Author is licensed under CC BY-SA-NC

Primena u kompanijama

- Administracija
- Finansije
- Upravljanje projektima
- Izveštavanje
- Poslovna komunikacija



LibreOffice 7.0



Prednosti LibreOffice-a

Besplatno
korišćenje

Nema licenci
po korisniku

Redovna
ažuriranja

Visoka
bezbednost

Aktivna
zajednica